

**HABITECH**  
PANCHTATVA

*Nature's Signature*

**Marketing Partner**

**ACRES IN INCHES**

BRINGING CLARITY INTO REAL ESTATE



*Bird Eye View*  
**HABITECH**  
PANCHTATVA

Plot No. 8A,  
Tech Zone - 4,  
Noida Extn



## *Nature's Signature*

The world is made up of five basic elements i.e. Aakash, vaayu, agni, jal and prithvi. These elements combine together and form Panchtatva, the divine force behind every creation. Inspired by these elements of creativity, we present to you, our one the prestigious project spread in 11 acres of land 'Panchtatva'. With a vision to create a futuristic space for a modern community based on time tested fundamentals. A dream truly inspired by nature.

The five forces behind 'Panchtatva' will enthral you with all the positivity each time you enter your dream home.





Habitech Panch Tatva is situated at Plot No. 8A, Tech Zone - 4, Noida Extn. Panch Tatva offers you to choose from 2BHK, 3BHK Apartments and Penthouses, customized to suit your lifestyle and desire.

## Fact Sheet - Panchtatva

Situated on 130 meter wide road	Community hall	Total Project Spread - 11 Acres
Golf putting & Chip	Clinic & dispensary	
Kids paradise and crutches	Library, Club	• 2 BHK + 2T - 940 sq. ft.
Custom Design Option	Earth quake resistant structure	• 2 BHK + 2T + Kids Room - 1195 sq. ft.
Sports club	24 x 7 security system	• 3 BHK + 2T - 1325 sq. ft.
Meditation center	Ample car parking space	• 3 BHK + 3T - 1525 sq. ft.
Recreational center	Excellent weather-proof	
Swimming pool	Provision for Ganga Water by Gr. Noida	





## *Golf Putting & Chip*

The landscape of Panchtatva is designed by the members of American Society of Golf Course. The Center piece of the Green Field has a golf putting & Chip. The course promises challenging terrain for seasoned golfers, as well as personalized coaching in dedicated driving range with putting greens for the beginners.

## *Restaurant & Bar*

We have given a proper consideration to your taste and planned a Multi-Cuisine restaurant & bar, Fine Dining Zone with a dedicated food court and lounge area.

## *Design your own home*

A choice of premium specifications and international brands to embellish your home the way you like it. Habitech offers you a choice between 2BHK, 3BHK & 4 BHK apartments and Penthouses, customized to suit your lifestyle and desire. You decide everything about the layout (Discuss with our team) & interiors from wide range of colors, materials and other fixtures for your home.

## *Kids Paradise*

Habitech goes an extra mile in delighting little toddlers and kids. A dedicated kid's paradise features playground equipment, plethora of toys and fun activities, as well as creche facilities for working mothers.

## *Sports Club*

Habitech provides you the facility of Sports Zone with Cricket Academy, Tennis, Basket Ball and Badminton Court, Golf Putting, Jogging track, meditation lawn, Art of living classes and Yoga Centre.

## *Swimming Pool*

Indoor swimming pools are the perfect solution to experiencing year round enjoyment. It also provides opportunities to relax with some good reading material in a floating lounge chair. In-house all seasons swimming pool at Panchtatva allows you, your family and guests an easy access to luxury in every season. Enjoy a refreshing experience during hot summers and humid rainy seasons.







## *Specifications*

Structure	Earthquake Resistance RCC Frame Structure as per Seismic Zone - 5
Flooring	Wooden Flooring in Master Bed Room / Vitrified Tiles in other Bed rooms / Drawing / Dining and All Stairs & Corridors with Marble / Kota Stone Flooring
Tile	Anti-skid tiles in Bathroom & Balconies
Exterior	Permanent Finish / Texture Paint
Kitchen	Slabs are well finished Granite Stone with Stainless Steel Sink and Drain Board, Glaze Tile Dado on wall up to 2 ft. over counter.
Bathroom	Equipped with Parry ware / Hindware / Euro of Equivalent Washbasins and WCS, Chrome Plated Tap fittings of Marc or Equivalent
Doors	All Doorframes in Marandi Wood or Equivalent with Skin Moulded Flush door and Window Frames and Shutters in Aluminum.
Painting	Oil Bound Distemper in entire flat.
POP	POP Punning & Comices in entire flat.
Electrical	Electrical (Copper) Wirings as per ISI Code with modular switches, Circuits with MCBs of approved make, TV & Telephone points in every room.
Security	Round the Clock Security System.

# Site Plan

## LEGEND

### L. No. Specifications

1. Guard Room & Entrance
2. Entrance Plaza & Fountain
3. Kids Play Area
4. Tennis Court
5. Badminton Court
6. Cycle Track
7. Club
8. Pool Side Lawn
9. Kids Pool
10. Party Lawn
11. Skating Rink
12. Putting Green
13. Basketball Court
14. Stepped Sitting Plaza.



## FLAT TYPOLOGY

	STUDIO FLAT (410 SQ.FT.)
	STUDIO FLAT (580 SQ.FT.)
	2 BHK+2TOL(940 SQ.FT.)
	2 BHK+KID'S +2TOL(1195 SQ.FT.)
	3 BHK+2TOL(1325 SQ.FT.)
	3BHK + 3TOL (1525 SQ.FT.)
	3BHK +4TOL+STUDY+DINING+DRESS(1790 SQ.FT.)
	4BHK + 4TOL/DRESS + DINING+ ENI FOYER (2370 SQ.FT.)

PHASE-2



*Our believe - "action with vision creates a positive distinction".*

We take pride and are yet humbled in being one of the foremost real estate company. It gives us a lot of pleasure to represent the most up market assets. Whether commercial or residential we acknowledge the customer's requirement and serve them with state of the art excellence.

Our mission at Habitech Infrastructure Ltd. is to work under necessities such as, Strategic Location, Stylish Design, Convenience, Class with Vastu, Idyllic Surroundings and affordable rates with strict observance to the legal aspects.



Habitech Crystal (Project Nearing Completion), KP - 3, Greater Noida



Business School of Delhi  
Greater Noida



Mayoor School,  
Expressway, Noida



Grand Heritage Resort  
City Park, Greater Noida

### *Some of our Key Projects*

Mayoor School, Expressway, Noida

Business School of Delhi, Greater Noida

Grand Heritage Resort, Adjoining City Park, Greater Noida

Crystal Mall, KP 3, Greater Noida

Habitech Business Park, Greater Noida

Glow Studio, Greater Noida

Hotel Regalia, Greater Noida



UNIT PLAN - 2 BHK + 2T  
 SUPER AREA - 940 SQ. FT.  
**Tower A6, A9 & A10**

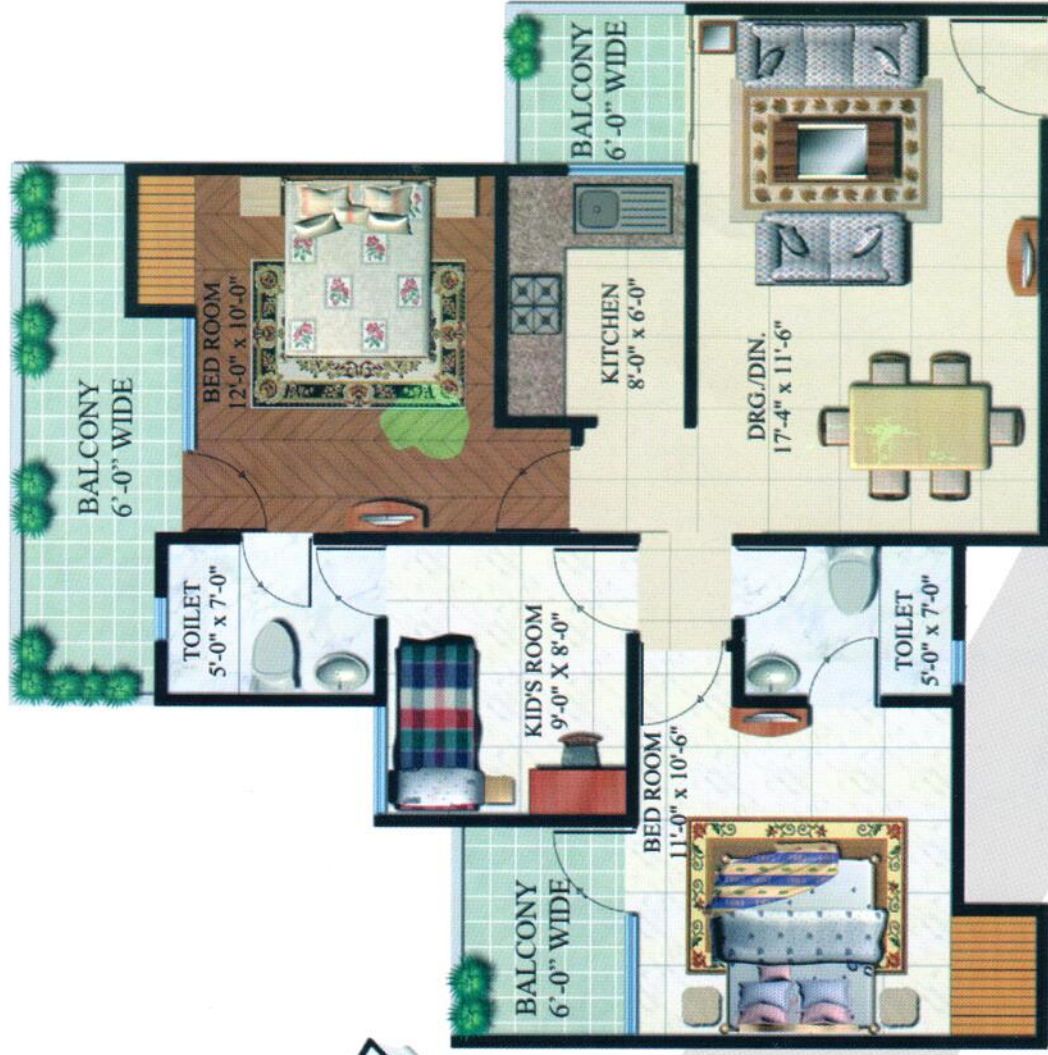




# Floor Plans

UNIT PLAN - 2 BHK + 2T + Kids Room  
SUPER AREA - 1195 SQ. FT.

**Tower A8, A9 & A10**



UNIT PLAN - 3 BHK + 2T  
 SUPER AREA - 1325 SQ. FT.  
**Tower A8**





UNIT PLAN - 3 BHK + 3T  
SUPER AREA - 1525 SQ. FT. (TYPE B)

**Tower A5 & A7**



## Promoters

Mr. Vipin Sahni is a professional Chartered Accountant with three decades of experience in Finance Management & Corporate Governance. His career chart depicts many successful commercial and educational projects in India. He is the promoter of Mayoor School & Business School of Delhi and also happens to be the promoter of 11 Acres integrated Habitech Real Estate Project in Greater Noida.

A popular figure in the vicinity of Noida and around, Mr. Sanjeev Kumar has been a key catalyst in the development of Greater Noida as a whole. He is also the founder & promoter of Heritage Club at Greater Noida which caters to the hospitality needs of MNC's and IT companies. Renowned as Realtor, Mr. Kumar has completed many projects including 11 Acres integrated Habitech Real Estate Project at Greater Noida.

A sociologist by profession, Mrs. Kiran Sahni is the key force behind conceptualization of PanchTatva. A post graduate in sociology, she has an impressive profile as a promoter of Mayoor School-Noida and Business School of Delhi-Greater Noida. Her experience played a vital role in idealizing and developing PanchTatva as a true representation of nature's five forces.

Mr. Sandeep Kumar is a young entrepreneur and he has been actively involved in marketing and planning aspects of the organization. Being the core strength behind the execution of Heritage Club, Habitech and various other projects, he has defined success, every where.



**HABITECH**  
Infrastructure Ltd.

#### SITE OFFICE

8 A, Tech Zone 4, Noida Extension (GNIDA)

#### CORPORATE OFFICE

C-26, Sector-3, Noida, U.P. (Near Sec.-16 Metro Station)

PHONE : 0120 4216666 (5 lines)

EMAIL : [info@habitechinfrastructure.co.in](mailto:info@habitechinfrastructure.co.in)

WEB : [www.habitechinfrastructure.co.in](http://www.habitechinfrastructure.co.in)

## Marketing Partner



**ACRES N INCHES**

BRINGING CLARITY INTO REAL ESTATE

B-6, 1<sup>st</sup> Floor, Sec.-4, Noida, U.P.

Phone : 0120-4101111

E-mail : [customersupport@acresninch.com](mailto:customersupport@acresninch.com)